

Standortformular - Formulaire d'emplacement 1071 - 68626201



Zürcher Wanderwege (ZAW)

Kanton
Canton Zürich

LK-Nr.
CN-No. 1071

Standort-Nr.
Emplacement No. 68626201

Bezirk
District ZH

Koordinaten
Coordinates 686'152 / 262'523



H.ü.M.
A.s.M. 540 m

Gemeinde
Commune Embrach

Standort
Emplacement _VZ Wissenbuck

GID-Nr.
GID No. 247



a 450 x 200 Beschriftung - Inscription

Husacher
Winkel Seeb 
Brueder
Bülach 

beidseitig - des 2 côtés
mont.: 29.07.2017



Standort - Emplacement

450 x 120 b

Embrach Oberdorf 
Winterthur 

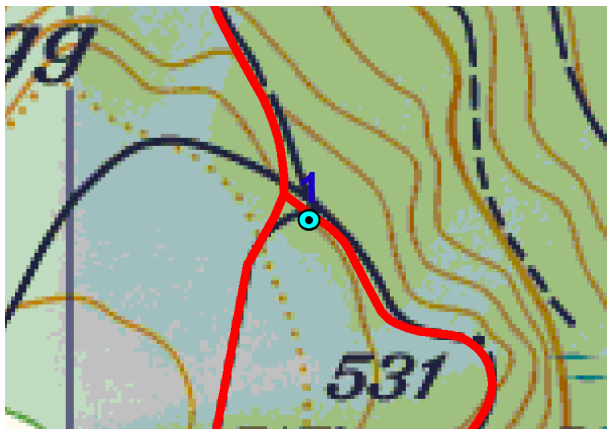
beidseitig - des 2 côtés
mont.: 29.07.2017

450 x 120 c

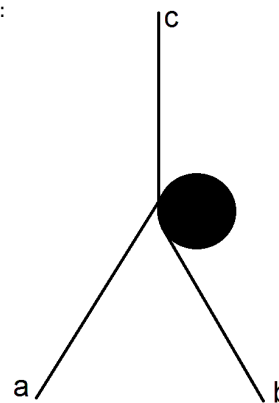
Embrach Unterdorf 
Pfungen 

beidseitig - des 2 côtés
mont.: 29.07.2017

Planskizze:
Esquisse
du plan:



Schema:
Schéma:



Bemerkung:
Note:

Befestigung:
Fixation:

Druckdatum/Date d'impression: 29.7.2017




14.06.2017

Arthur Unterdorf

Embrach Unterdorf
Pfungen

14.06.2017

Husacher
Winkel Seeb 

Brueder
Bülach  

68626201-15

Embrach Oberdorf 

Winterthur  

68626201-15

14.06.2017