

Standortformular - Formulaire d'emplacement 1051 - 67827201



Zürcher Wanderwege (ZAW)

Kanton
Canton Zürich

LK-Nr.
CN-No. 1051

Standort-Nr.
Emplacement No. 67827201

Bezirk
District ZH

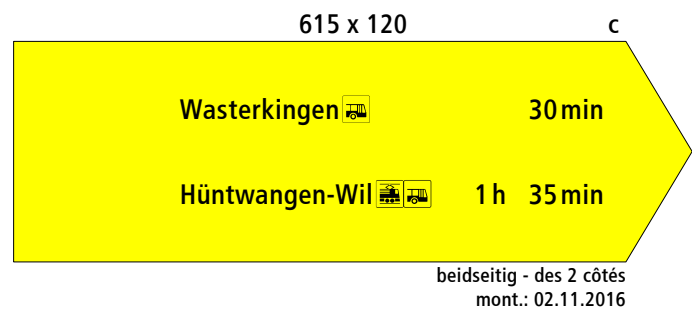
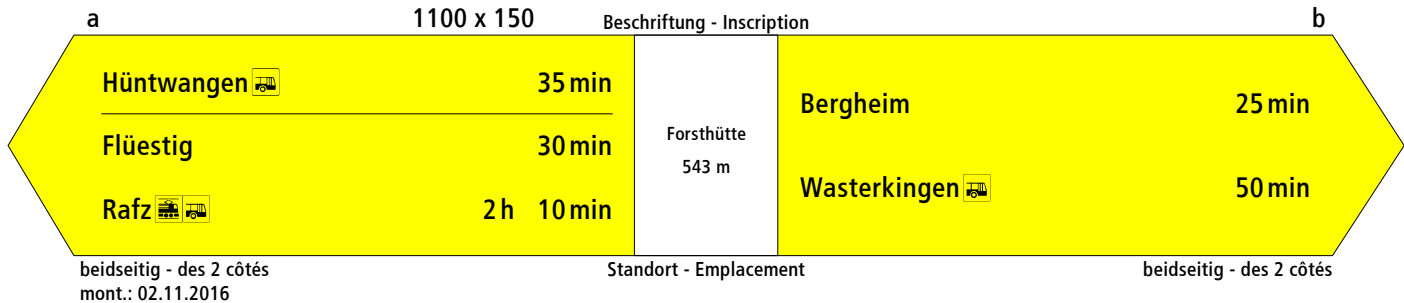
Koordinaten
Coordinates 678'395 / 272'943

H.ü.M.
A.s.M. 543 m

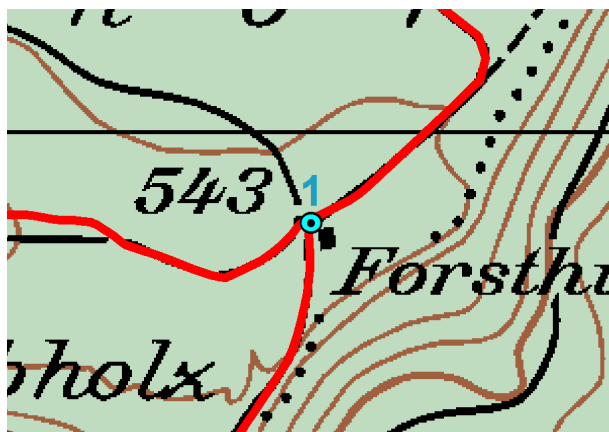
Gemeinde
Commune Wasterkingen

Standort
Emplacement Forsthütte

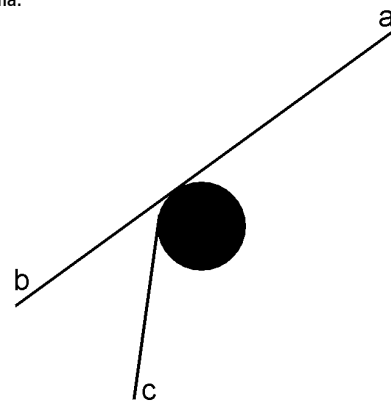
GID-Nr.
GID No. 452



Planskizze:
Esquisse
du plan:



Schema:
Schéma:



Bemerkung:
Note:

Befestigung:
Fixation:

Druckdatum/Date d'impression: 27.5.2018



Hüntwangen 35 min
Flüestig 30 min
Rafz 2h 10min

Forsthütte
543 m

Bergheim 25 min
Wasterkingen 50 min

Wasterkingen 30 min
Hüntwangen-Wil 1h 35 min



Hüntwangen  35 min
Flüestig 30 min
Rafz   2h 10min

Forsthütte
543 m
67827201-16

Bergheim 25 min
Wasterkingen  50 min

Hochrhein-Höhenweg
Küssaburgweg 

Hochrhein-Höhenweg
Küssaburgweg  

67827201-16

Wasterkingen  30 min
Hüntwangen-Wil   1 h 35 min